

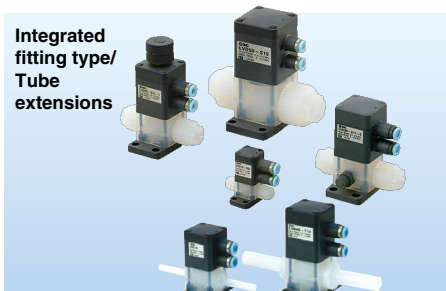
High Purity Chemical Liquid Valve Air Operated Integrated Fitting Type *JLV Series* p. 20



2-port

Model		JLV20	JLV30
Orifice diameter		ø4	ø8
Tubing size	mm size	—	—
	inch size	1/4"	3/8"

High Purity Chemical Liquid Valve Air Operated Compact Type *LVD Series* p. 28



Integrated fitting type

Model		LVD10	LVD20	LVD30	LVD40	LVD50
Orifice diameter		ø2	ø4	ø8	ø10	ø16
Tubing size	mm size	3, 4	4, 6	6, 8, 10	10, 12	12, 19
	inch size	1/8	1/8, 3/16, 1/4	1/4, 3/8	3/8, 1/2	1/2, 3/4

Tube extensions

Model		LVD20	LVD30	LVD40	LVD50
Orifice diameter		ø4	ø8	ø10	ø16
Tubing size	mm size	6	10	12	19
	inch size	1/4	3/8	1/2	3/4

Improved Corrosion Resistance

Actuator section: PVDF

Air operated

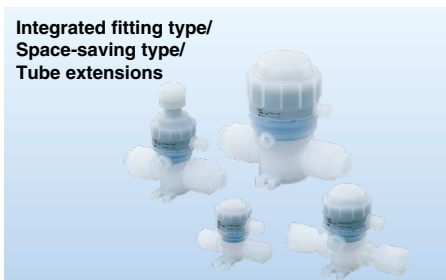
p. 41

Manually operated

p. 51



High Purity Chemical Liquid Valve Non-Metallic Exterior *LVQ Series* p. 62



Integrated fitting type

Model		LVQ20	LVQ30	LVQ40	LVQ50	LVQ60
Orifice diameter		ø4	ø8	ø10	ø16	ø22
Tubing size	mm size	3, 4, 6	6, 8, 10	10, 12	12, 19	19, 25
	inch size	1/8, 3/16, 1/4	1/4, 3/8	3/8, 1/2	1/2, 3/4	3/4, 1

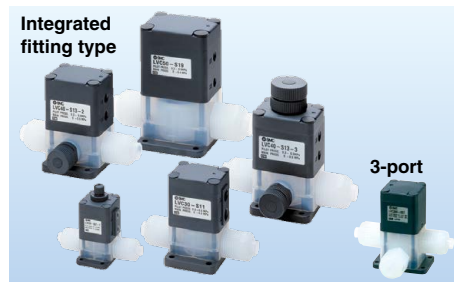
Space-saving type

Model		LVQ20	LVQ30	LVQ40	LVQ50	LVQ60
Orifice diameter		ø4	ø8	ø10	ø16	ø22
Fitting size		2	3	4	5	6

Tube extensions

Model		LVQ20	LVQ30	LVQ40	LVQ50	LVQ60
Orifice diameter		ø4	ø8	ø10	ø16	ø22
Tubing size	mm size	6	10	12	19	25
	inch size	1/4	3/8	1/2	3/4	1

High Purity Chemical Liquid Valve Air Operated Integrated Fitting Type **LVC Series** p. 152



2-port

Model	LVC2□	LVC3□	LVC4□	LVC5□	LVC6□
Orifice diameter	ø4	ø8	ø10	ø16	ø22
Tubing size	mm size	3, 4, 6	6, 8, 10	10, 12	12, 19
	inch size	1/8, 3/16, 1/4	1/4, 3/8	3/8, 1/2	1/2, 3/4

3-port

Model	LVC20□	
Orifice diameter	ø4	
Tubing size	mm size	4, 6
	inch size	1/8, 3/16, 1/4

High Purity Chemical Liquid Valve Air Operated Threaded Type **LVA Series** p. 171



2-port

Model	LVA1□	LVA2□	LVA3□	LVA4□	LVA5□	LVA6□
Orifice diameter	ø2	ø4	ø8	ø12	ø20	ø22
Port size	1/8	1/4	1/4	3/8	1/2	3/4
	1/4	1/4	1/4	1/2	3/4	1
Body material	Stainless steel 316	○	○	○	○	○
	PPS	○	○	—	○	—
	PFA	○	—	—	○	—

3-port

Model	LVA2□0
Orifice diameter	ø4
Port size	1/4
Body material	PFA

High Purity Chemical Liquid Valve Manually Operated Integrated Fitting Type/Threaded Type **LVH Series** p. 190



Integrated fitting type

Model	LVH20	LVH30	LVH40
Orifice diameter	ø4	ø8	ø10
Tubing size	mm size	3, 4, 6	6, 8, 10
	inch size	1/8, 3/16, 1/4	1/4, 3/8

Threaded port type

Model	LVH20				LVH30			LVH40		
Orifice diameter	ø4				ø8			ø12		
Body material	Stainless steel 316	PPS	PFA		Stainless steel 316	PPS	PFA	Stainless steel 316	PPS	PFA
	1/8	1/4	1/4	1/4	1/4	3/8	3/8	3/8	1/2	1/2

For Organic Solvents



Air Operated p. 186
LVA-D-AD-AN Series

Manually Operated p. 201
LVH-M-D-AD-AN Series

Vinyl Chloride Air Operated Valve *LVP Series*

p. 210



Model	LVP5□	LVP6□	
Applicable tubing O.D.	O.D. ø22 (Nominal dia. 16A)	O.D. ø26 (Nominal dia. 20A)	O.D. ø32 (Nominal dia. 25A)
Orifice diameter	ø16		ø22
Valve type	N.C./N.O./Double acting		

PVC Quick Drain Valve *LVW Series*

p. 216



Model	LVW60	LVW80		LVW90		
Applicable tubing O.D.	ø32 (Nominal dia. 25A)	ø38 (Nominal dia. 32A)	ø48 (Nominal dia. 40A)	ø60 (Nominal dia. 50A)	ø75 (Nominal dia. 65A)	ø89 (Nominal dia. 80A)
Orifice diameter	ø25		ø40	ø65		ø80
Valve type	Double acting					

Fluoropolymer Needle Valve *LVN Series*

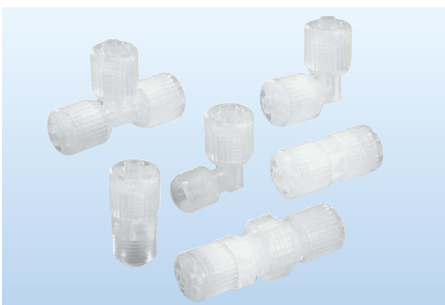
p. 224



Model	LVN20	LVN30	LVN40
Orifice diameter	ø4.4	ø8	ø10
Tubing size	mm size	4, 6	6, 8, 10
	inch size	1/8, 3/16, 1/4	1/4, 3/8

Fluoropolymer Hyper Fittings *LQ1 Series*

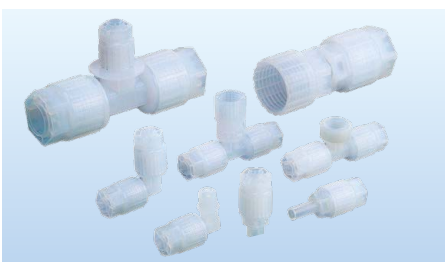
p. 241



Model	LQ1□10	LQ1□20	LQ1□30	LQ1□40	LQ1□50	LQ1□60
Max. operating pressure (at 20°C)	1.0 MPa					
Operating temperature	0 to 200°C					
Applicable tubing size	mm size					
	inch size					

Fluoropolymer Hyper Fittings Flare Type *LQ3 Series*

p. 279



Model	LQ3□10	LQ3□20	LQ3□30	LQ3□40	LQ3□50	LQ3□60	LQ3□70
Material	NEW PFA						
Max. operating pressure (at 20°C)	1.0 MPa						
Operating temperature	Nut material PVDF		0 to 150°C				
	Nut material PFA		0 to 200°C				
Applicable tubing size	mm size						
	inch size						

Fluoropolymer Bore Through Connector **LQHB Series**

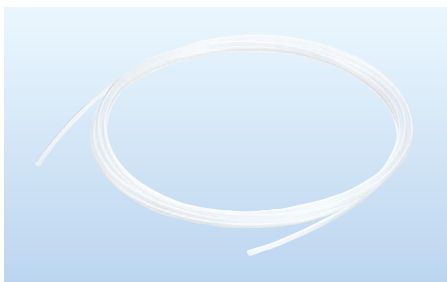
p. 305



Model		LQHB
Applicable tubing O.D.	mm size	ø3 to ø25
	inch size	1/8" to 1"
Operating temperature		0 to 200°C

Fluoropolymer Tubing **TL/TIL Series**

p. 312

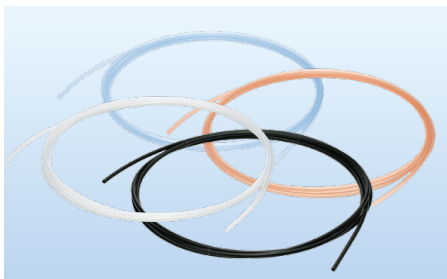


Model	TL (mm size)					
Tubing model	TL0403	TL0604	TL0806	TL1008	TL1210	TL1916
O.D. x I.D. (mm)	ø4 x ø3	ø6 x ø4	ø8 x ø6	ø10 x ø8	ø12 x ø10	ø19 x ø16

Model	TIL (inch size)							
Tubing model	TIL01	TILB01	TIL05	TIL07	TIL11	TIL13	TIL19	TIL25
Nominal size (inch)	1/8"	1/8"	3/16"	1/4"	3/8"	1/2"	3/4"	1"
O.D. x I.D. (inch)	1/8" x 0.086"	1/8" x 1/16"	3/16" x 1/8"	1/4" x 5/32"	3/8" x 1/4"	1/2" x 3/8"	3/4" x 5/8"	1" x 7/8"

Fluoropolymer Tubing (PFA) **TLM/TILM Series**

From p. 315



Model		TLM (mm size)						
Tubing model		TLM0201	TLM0302	TLM0425	TLM0403	TLM0604	TLM0806	TLM1075
Tubing size		ø2 x ø1	ø3 x ø2	ø4 x ø2.5	ø4 x ø3	ø6 x ø4	ø8 x ø6	ø10 x ø7.5
O.D.	mm	2	3	4	4	6	8	10
I.D.	mm	1	2	2.5	3	4	6	7.5

Model		TLM (mm size)					
Tubing model		TLM1008	TLM1209	TLM1210	TLM1613	TLM1916	TLM2522
Tubing size		ø10 x ø8	ø12 x ø9	ø12 x ø10	ø16 x ø13	ø19 x ø16	ø25 x ø22
O.D.	mm	10	12	12	16	19	25
I.D.	mm	8	9	10	13	16	22

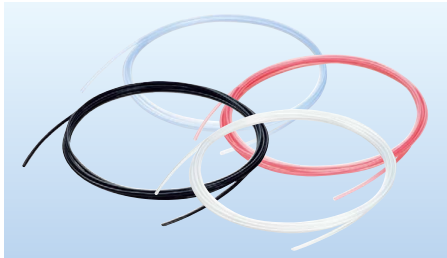
Model		TILM (inch size)				
Tubing model		TILM01	TILMB01	TILM05	TILM07	TILM11
Tubing size		1/8" x 0.086"	1/8" x 1/16"	3/16" x 1/8"	1/4" x 5/32"	3/8" x 1/4"
O.D.	inch	1/8"	1/8"	3/16"	1/4"	3/8"
	mm	3.18		4.75	6.35	9.53
I.D.	inch	0.086"	1/16"	1/8"	5/32"	1/4"
	mm	2.18	1.58	3.15	3.95	6.33

Model		TILM (inch size)			
Tubing model		TILM13	TILM19	TILM25	TILM32
Tubing size		1/2" x 3/8"	3/4" x 5/8"	1" x 7/8"	1-1/4" x 1-1/10"
O.D.	inch	1/2"	3/4"	1"	1-1/4"
	mm	12.7	19.05	25.4	31.75
I.D.	inch	3/8"	5/8"	7/8"	1-1/10"
	mm	9.5	15.85	22.2	27.95



FEP Tubing (Fluoropolymer) *TH/TH Series*

From p. 317



Model		TH (mm size)							
Tubing model		TH0402	TH0425	TH0604	TH0806	TH1075	TH1008	TH1209	TH1210
O.D.	mm	4	4	6	8	10	10	12	12
I.D.	mm	2	2.5	4	6	7.5	8	9	10

Model		TIH (inch size)										
Tubing model		TIHA01	TIHB01	TIHC01	TIHA05	TIHB05	TIHA07	TIHB07	TIHA11	TIHB11	TIH13	TIH19
O.D.	inch	1/8"			3/16"		1/4"		3/8"		1/2"	3/4"
	mm size	3.18			4.75		6.35		9.53		12.7	19.05
I.D.	inch	0.093"	0.086"	0.065"	0.137"	0.124" (1/8")	0.18"	0.156" (5/32")	0.275"	0.25" (1/4")	0.374" (3/8")	0.624" (5/8")
	mm size	2.36	2.18	1.65	3.48	3.15	4.57	3.95	6.99	6.33	9.5	15.85

Soft Fluoropolymer Tubing *TD/TID Series*

From p. 320



Model		TD (mm size)				
Tubing model		TD0425	TD0604	TD0806	TD1075	TD1209
O.D.	mm size	4	6	8	10	12
I.D.	mm size	2.5	4	6	7.5	9

Model		TID (inch size)				
Tubing model		TID01	TID05	TID07	TID11	TID13
O.D.	inch size	1/8"	3/16"	1/4"	3/8"	1/2"
	mm size	3.18	4.75	6.35	9.53	12.7
I.D.	inch size	0.086"	0.124" (1/8")	0.156" (5/32")	0.25" (1/4")	0.374" (3/8")
	mm size	2.18	3.15	3.95	6.33	9.5

Related Products

p. 322

Tube Cutter: TK-5



As this product is made of stainless steel it can be used inside clean rooms
 * However, this product is packaged regularly, not in double packaging.